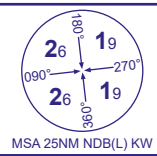


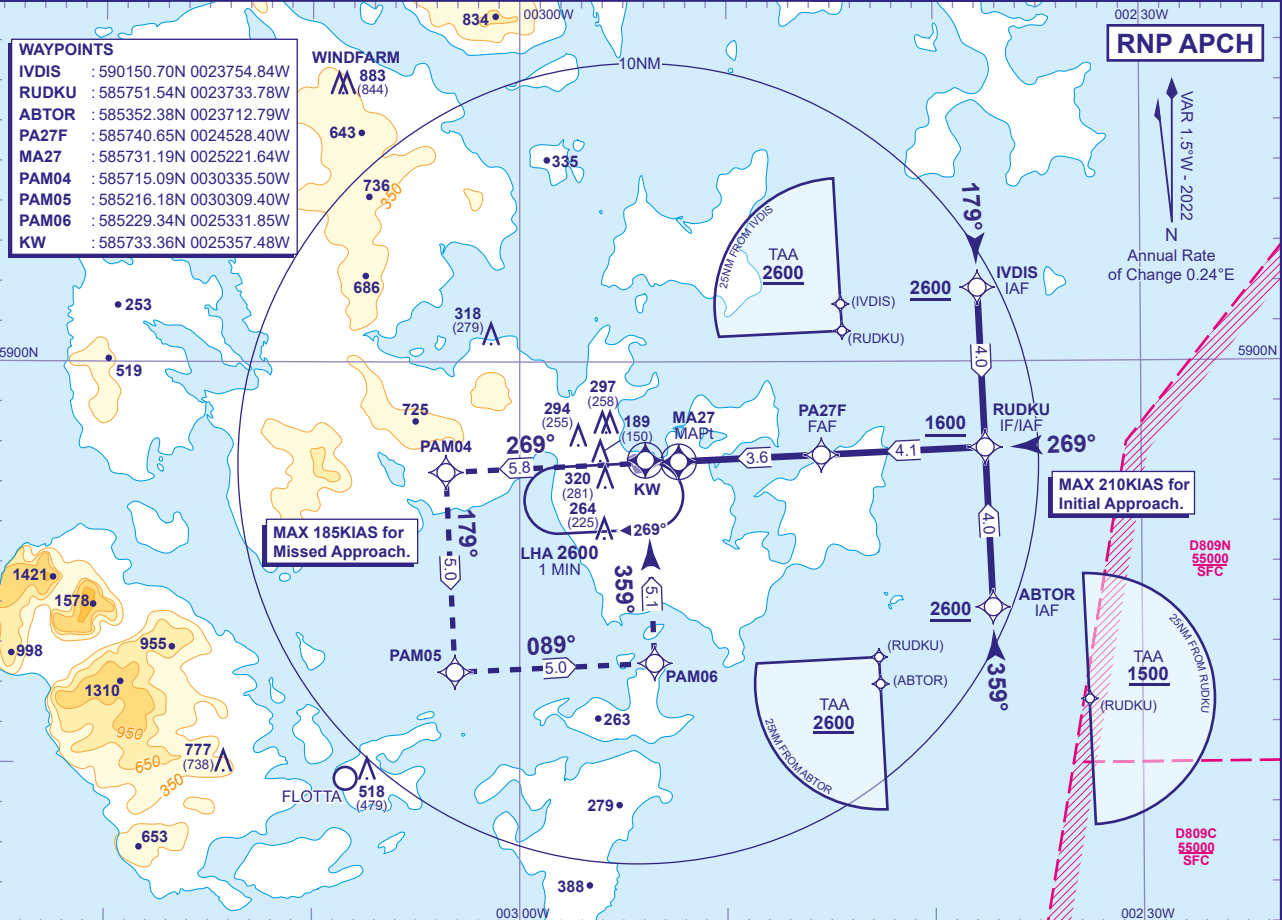
INSTRUMENT APPROACH CHART - ICAO

KIRKWALL RNP RWY 27 (ACFT CAT A,B,C)



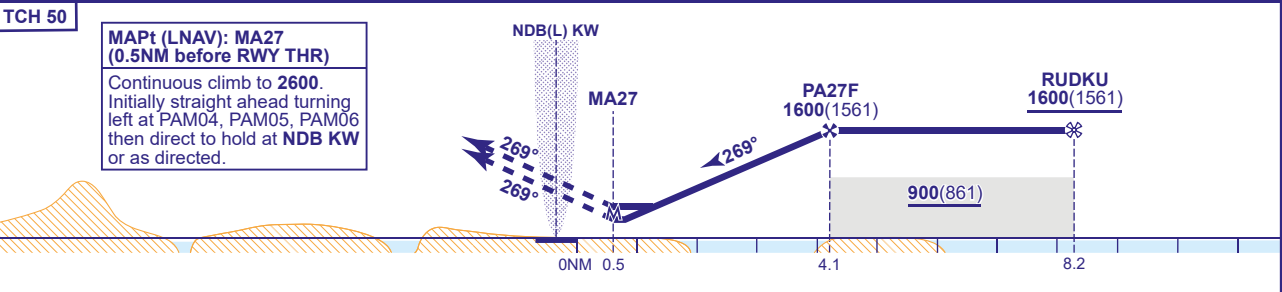
APP	118.305	KIRKWALL APPROACH	AD ELEVATION	58
TWR	118.305	KIRKWALL TOWER	THR ELEVATION	39
AFIS	118.305	KIRKWALL INFORMATION	OBSTACLE ELEVATION	883 AMSL (844) (ABOVE THR)
ATIS	108.600	KIRKWALL INFORMATION	BEARINGS ARE MAGNETIC	

TRANSITION ALTITUDE 3000



RECOMMENDED PROFILE Gradient 6.12%, 372FT/NM

NM to MAPt (MA27)	3	2	1
ALT(HGT)	1390(1351)	1020(981)	650(611)



Aircraft Category		A	B	C	Rate of descent	G/S KT	160	140	120	100	80
OCA (OCH)	LNAV	470(431)				FT/MIN	990	870	740	620	500
VM(C)OCA (OCH AAL)	Total Area	650(592)	660(602)	1250(1192)							
	South of RWY 09/27	650(592)	660(602)	750(692)							

**NOTE**

- 1 Use of RNP procedures at this aerodrome restricted to Highlands and Islands Airports Ltd - Approved Operators only.
- 2 Use of this RNP procedure is strictly PPR from the aerodrome operator.
- 3 Prior to commencing the procedure, pilots are to broadcast on AFIS 118.305 with flight details and intentions.

**CHANGE (12/21): EGNOS AND LPV REMOVED.**